

## Installation Guide for DATALOGGER for Windows Ver.7.x

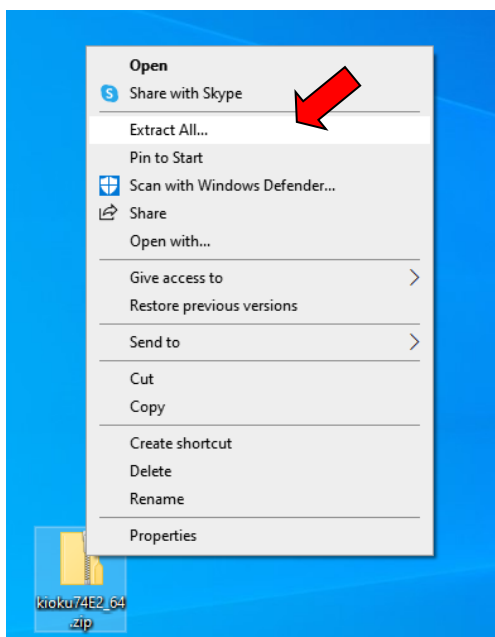
### Before installation

- Before you begin, make sure your PC meets the following system requirements.
  - CPU: 2 GHz or faster
  - Operating system: Windows 11, Windows 10, Windows 8.1 with latest service packs installed
  - Memory: 8 GB RAM (64-bit); 4 GB RAM (32-bit)
  - Hard disk: 4 GB of available disk space
  - .NET version: .NET Framework 4.7.2 or higher
  - Others: USB port available
- Internet connection and email address are required for alarm email
- Log in to your PC as an administrator. If your PC is managed by your system administrator, you must contact them before setting.
- Close resident programs and other applications such as virus scanners.
- Do not connect the datalogger until the installation finishes properly.

### Install the software

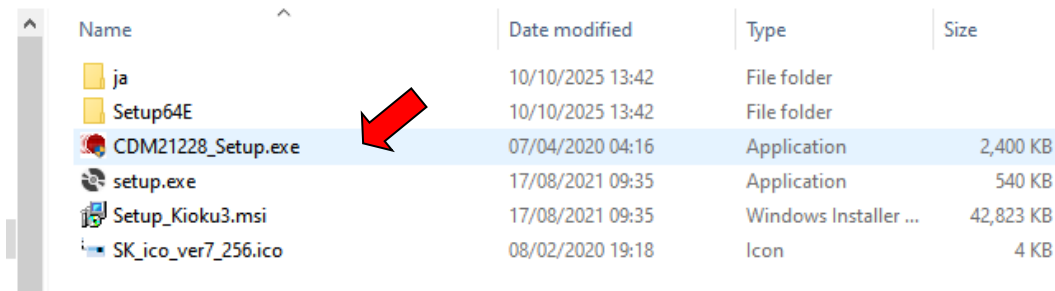
1. Move the zip file downloaded from our website to your desktop, right-click on the file, and then select **Extract All** or **Unzip**.

Note: An attempt to install without extracting results in a popup message to alert that the files are missing.



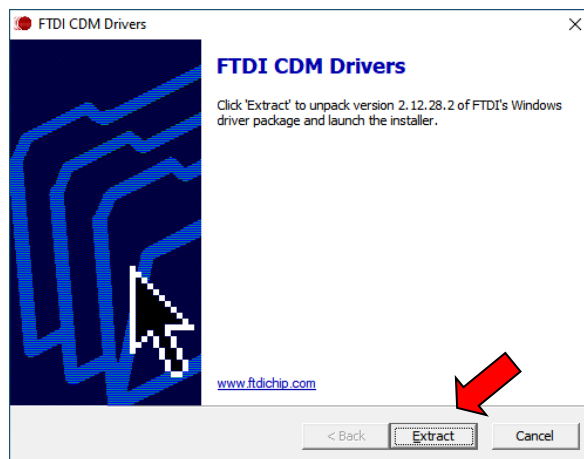
## 2. Install the USB driver

- 1) Open **CDM21228\_Setup.exe** in the extracted folder.  
If you see a User Account Control message, select **Yes**.

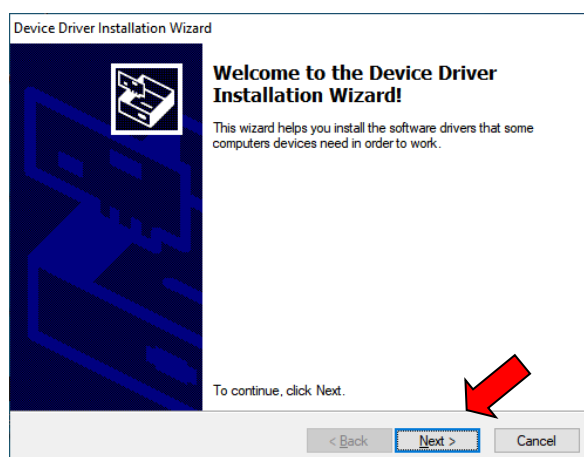


Name	Date modified	Type	Size
ja	10/10/2025 13:42	File folder	
Setup64E	10/10/2025 13:42	File folder	
CDM21228_Setup.exe	07/04/2020 04:16	Application	2,400 KB
setup.exe	17/08/2021 09:35	Application	540 KB
Setup_Kioku3.msi	17/08/2021 09:35	Windows Installer ...	42,823 KB
SK_ico_ver7_256.ico	08/02/2020 19:18	Icon	4 KB

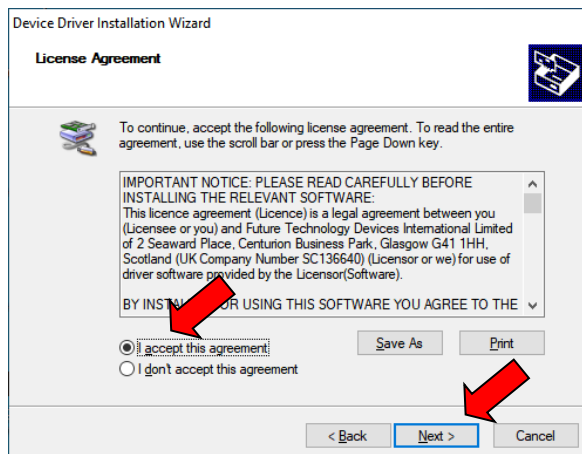
- 2) Select **Extract** to begin installation.



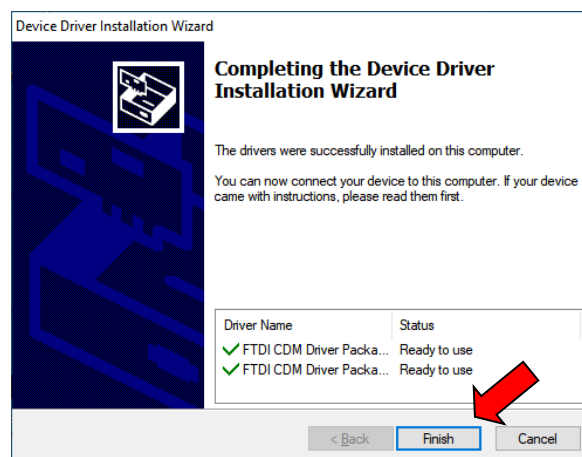
- 3) Select **Next** on the installation wizard.



- 4) After reading the license agreement, select **I accept this agreement** and then **Next** to proceed.



- 5) Select **Finish** to complete the installation.



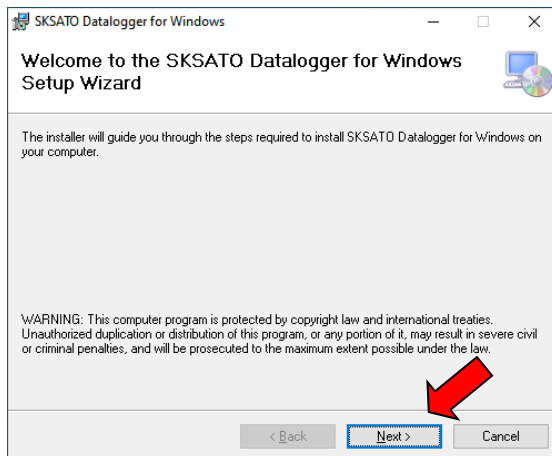
### 3. Install the main software

- 1) Open **setup.exe** in the extracted folder.

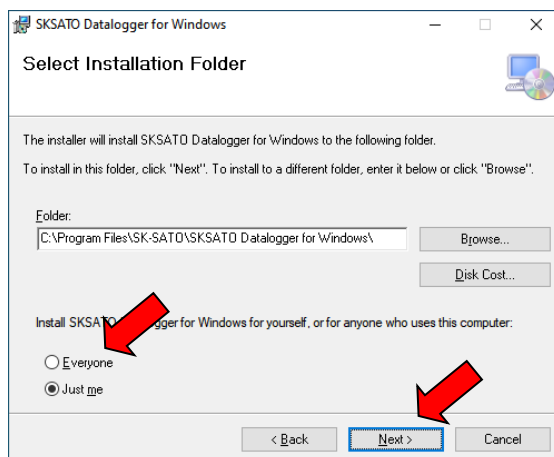
Name	Date modified	Type	Size
ja	10/10/2025 13:42	File folder	
Setup64E	10/10/2025 13:42	File folder	
CDM21228_Setup.exe	07/04/2020 04:16	Application	2,400 KB
setup.exe	17/08/2021 09:35	Application	540 KB
Setup_Kioku3.msi	17/08/2021 09:35	Windows Installer ...	42,823 KB
SK_ico_ver7_256.ico	08/02/2020 19:18	Icon	4 KB

If you see a window to notify of installing .NET Framework 4.7.2, follow the instructions to install it.

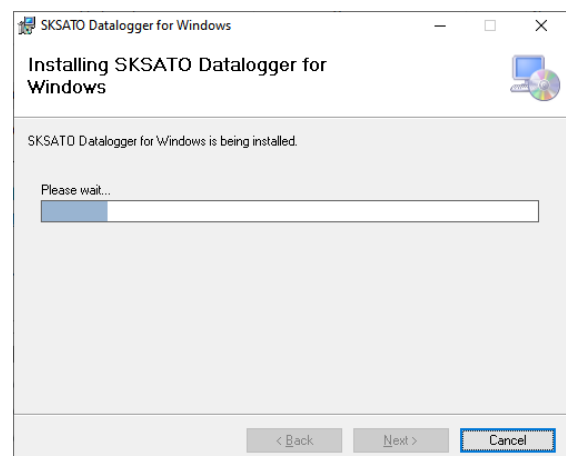
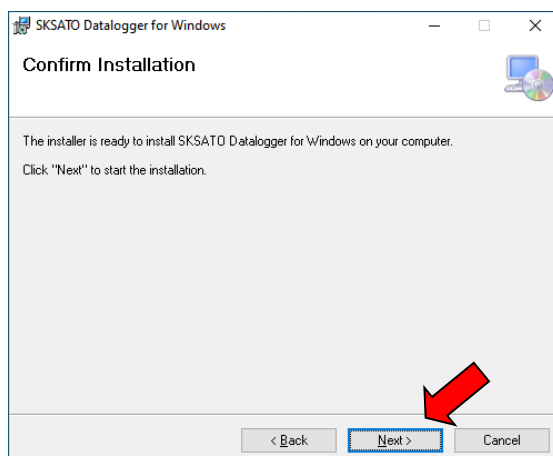
- 2) Select **Next** on the setup wizard.



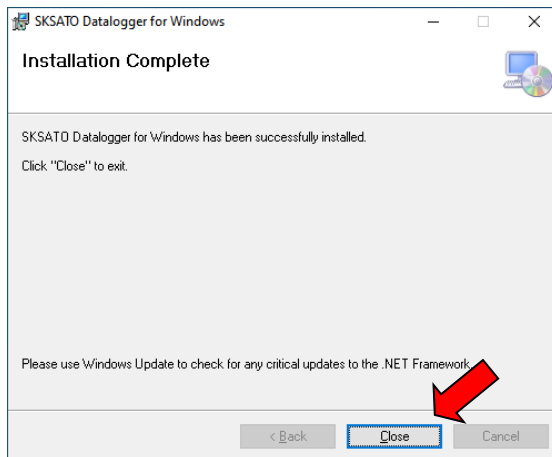
- 3) Choose whether you install the software for all users or only yourself, and then select **Next** without changing the install destination.



- 4) Select **Next** to start installation. Wait with no other programs opened until the progress bar window disappears.



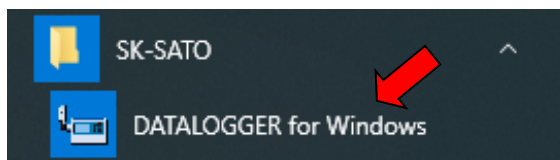
5) Select **Close** when the installation is complete and the following window is shown.



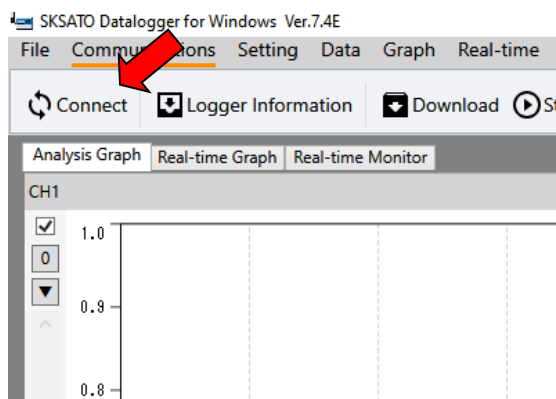
## Connect to PC

Connect the datalogger and the PC with an attached USB cable. The driver will be installed automatically.

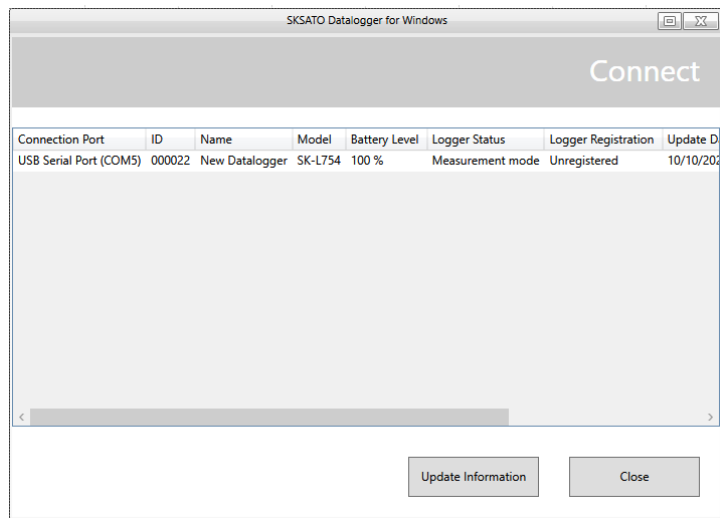
- 1) Press the power key on the datalogger for 2 seconds to turn it on.
- 2) Select the folder of **SK-SATO** and choose **DATALOGGER for Windows** to launch the software.



3) Select **Connect** within **Communications** menu.



- 4) USB ports connected to the PC are automatically scanned to show the connected dataloggers.



- 5) Connection is complete. Configure the datalogger via the software at your preference.

Y.10E